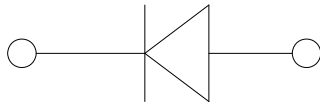
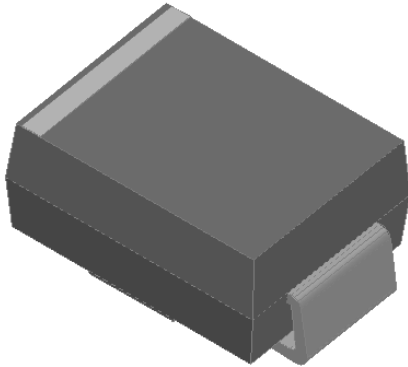


## Surface Mount Schottky Rectifier



### Features

- N+ IMP, Passivation Dep
- Low profile package
- Ideal for automated placement
- Guardring for overvoltage protection
- Low power losses, high efficiency
- High forward surge capability
- Meets MSL level 1, per J-STD-020, LF maximum peak of 260 °C

### Typical Applications

For use in low voltage high frequency inverters, freewheeling, DC/DC converters, and polarity protection applications.

### Mechanical Data

- **Package:** DO-214AA (SMB)  
Molding compound meets UL 94 V-0 flammability rating, RoHS-compliant, halogen-free
- **Terminals:** Tin plated leads, solderable per J-STD-002 and JESD22-B102
- **Polarity:** Cathode line denotes the cathode end

### ■Maximum Ratings (T<sub>j</sub>=25°C Unless otherwise specified)

PARAMETER	SYMBOL	UNIT	SS								
			52BH	53BH	54BH	55BH	56BH	58BH	510BH	515BH	520BH
Device marking code			SS								
			52BH	53BH	54BH	55BH	56BH	58BH	510BH	515BH	520BH
Repetitive peak reverse voltage	V <sub>RRM</sub>	V	20	30	40	50	60	80	100	150	200
Average rectified output current @60Hz sine wave, resistance load, T <sub>L</sub> (FIG.1)	I <sub>O</sub>	A	5.0								
Surge(non-repetitive) forward current	@60Hz half-sine wave, 1 cycle, T <sub>j</sub> =25°C	I <sub>FSM</sub>	A	100							
	@1ms,square wave, 1 time, T <sub>j</sub> =25°C			200							
Typical junction capacitance @ Measured at 1MHZ and Applied Reverse Voltage of 4.0 V D.C.	C <sub>j</sub>	pF	250		210		140		80		
Storage temperature	T <sub>stg</sub>	°C	-55 ~+175								
Junction temperature	T <sub>j</sub>	°C	-55~+150				-55 ~+175				



# SS52BH THRU SS520BH

## ■Electrical Characteristics (T<sub>j</sub>=25°C Unless otherwise specified)

PARAMETER		SYMBOL	UNIT	TEST CONDITIONS	MIN	TYP	MAX
Instantaneous forward voltage drop per diode	SS52BH~SS54BH	V <sub>F</sub>	V	I <sub>FM</sub> =5.0A	-	0.50	0.60
	SS55BH~SS56BH				-	0.61	0.70
	SS58BH~SS510BH				-	0.77	0.85
	SS515BH~SS520BH				-	0.81	0.90
DC reverse current at rated DC blocking voltage per diode @ V <sub>RM</sub> =V <sub>RRM</sub>	SS52BH~SS54BH	I <sub>RRM</sub>	mA	T <sub>j</sub> =25°C	-	-	0.50
				T <sub>j</sub> =125°C	-	-	5.0
	SS55BH~SS56BH			T <sub>j</sub> =25°C	-	-	0.50
				T <sub>j</sub> =125°C	-	-	5.0
	SS58BH~SS510BH			T <sub>j</sub> =25°C	-	-	0.10
				T <sub>j</sub> =125°C	-	-	5.0
	SS515BH~SS520BH			T <sub>j</sub> =25°C	-	-	0.10
				T <sub>j</sub> =125°C	-	-	5.0

Note1:Pulse test:300uS pulse width,1% duty cycle

Note2:Pulse test:pulse width 40mS

## ■Thermal Characteristics (T<sub>j</sub>=25°C Unless otherwise specified)

PARAMETER	SYMBOL	UNIT	SS								
			52BH	53BH	54BH	55BH	56BH	58BH	510BH	515BH	520BH
Thermal resistance	R <sub>θJ-A</sub>	°C/W	58 <sup>1)</sup>								
	R <sub>θJ-L</sub>		20 <sup>1)</sup>								
	R <sub>θJ-C</sub>		18 <sup>1)</sup>								

Note:  
 (1) Thermal resistance from junction to ambient and from junction to lead mounted on P.C.B. with 0.6" x 0.6" (16 mm x 16 mm) copper pad areas



# SS52BH THRU SS520BH

## ■ Characteristics(Typical)

FIG1: Io-TL Curve

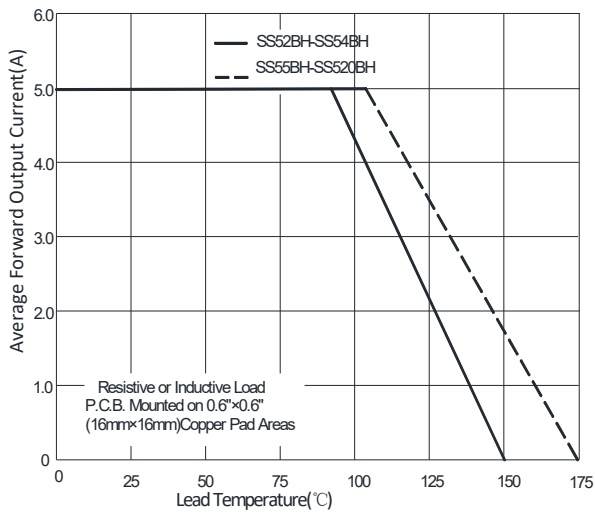


FIG2: Surge Forward Current Capability

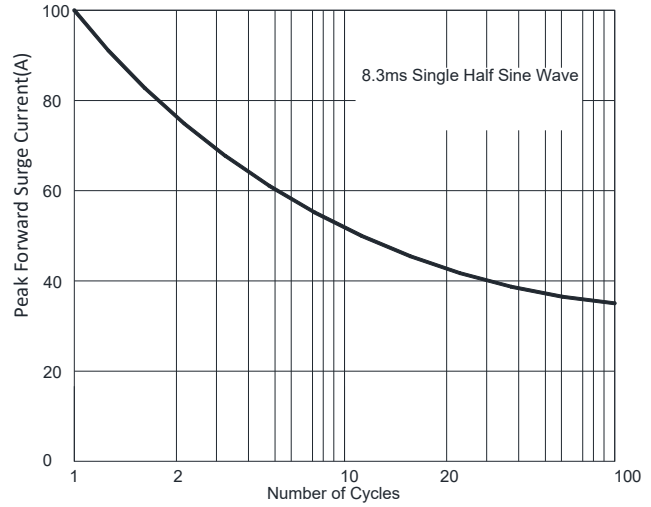


FIG3: Forward Voltage

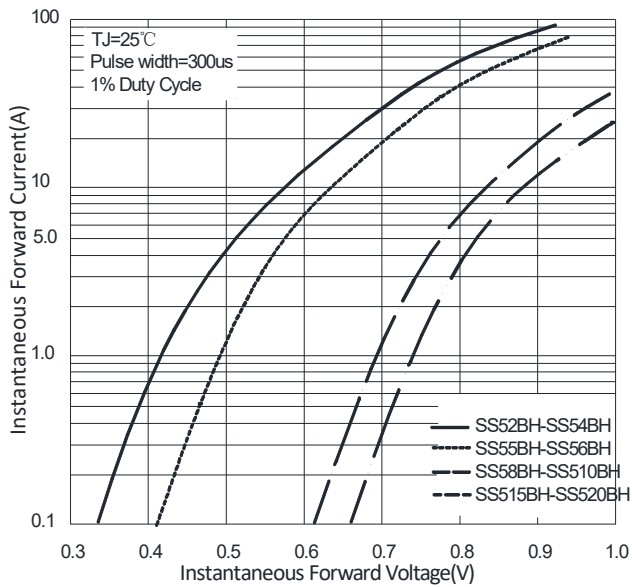
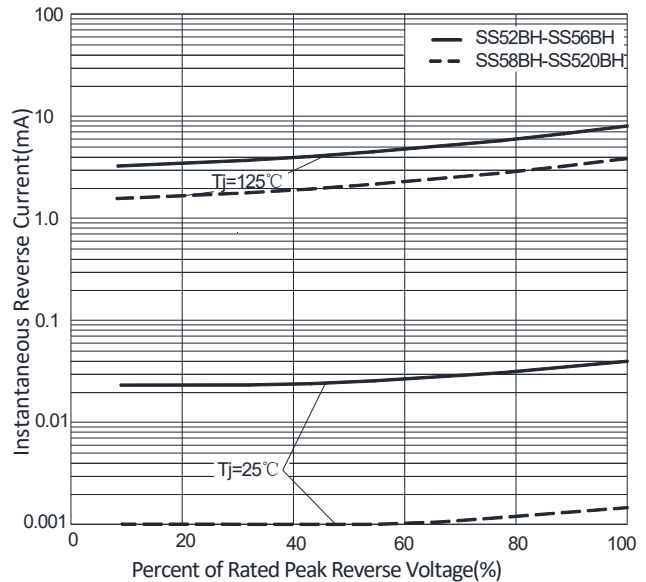


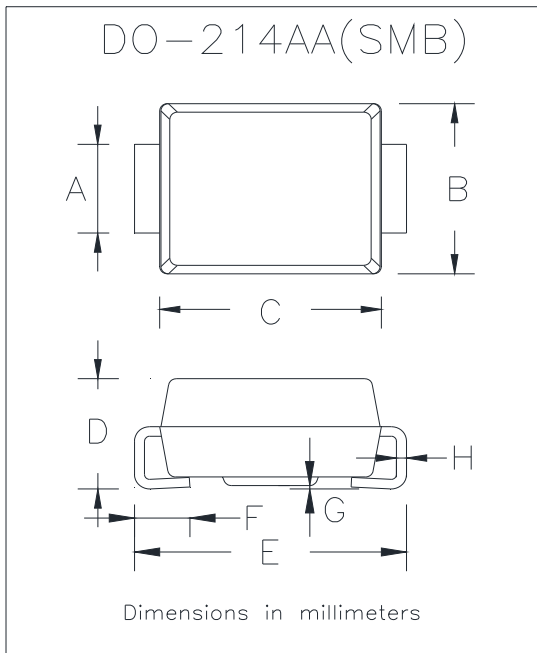
FIG4: Instantaneous Reverse Characteristics





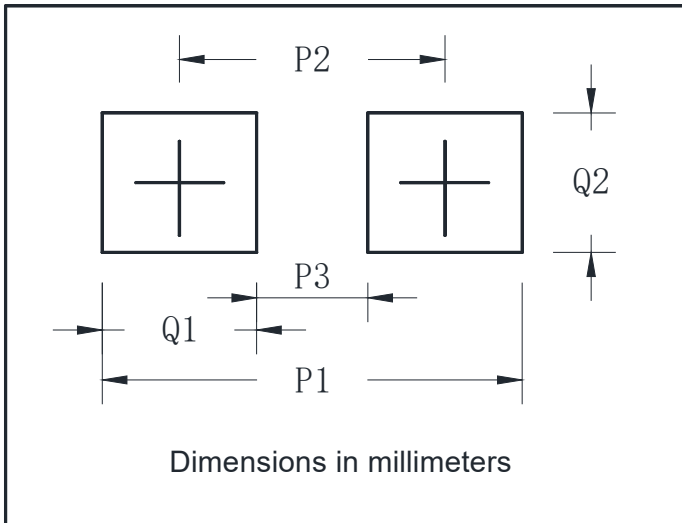
# SS52BH THRU SS520BH

## ■ Outline Dimensions



DO-214AA(SMB)		
Dim	Min	Max
A	1.85	2.15
B	3.30	3.94
C	4.05	4.75
D	1.99	2.61
E	5.21	5.59
F	0.90	1.41
G	0.05	0.20
H	0.15	0.31

## ■ Suggested pad layout



DO-214AA(SMB)	
Dim	Millimeters
P1	6.8
P2	4.3
P3	1.8
Q1	2.5
Q2	2.3



## SS52BH THRU SS520BH

---

### Disclaimer

The information presented in this document is for reference only. Yangzhou Yangjie Electronic Technology Co., Ltd. reserves the right to make changes without notice for the specification of the products displayed herein to improve reliability, function or design or otherwise.

The product listed herein is designed to be used with ordinary electronic equipment or devices, and not designed to be used with equipment or devices which require high level of reliability and the malfunction of which would directly endanger human life (such as medical instruments, transportation equipment, aerospace machinery, nuclear-reactor controllers, fuel controllers and other safety devices), Yangjie or anyone on its behalf, assumes no responsibility or liability for any damages resulting from such improper use of sale.

This publication supersedes & replaces all information previously supplied. For additional information, please visit our website [http:// www.21yangjie.com](http://www.21yangjie.com) , or consult your nearest Yangjie's sales office for further assistance.